



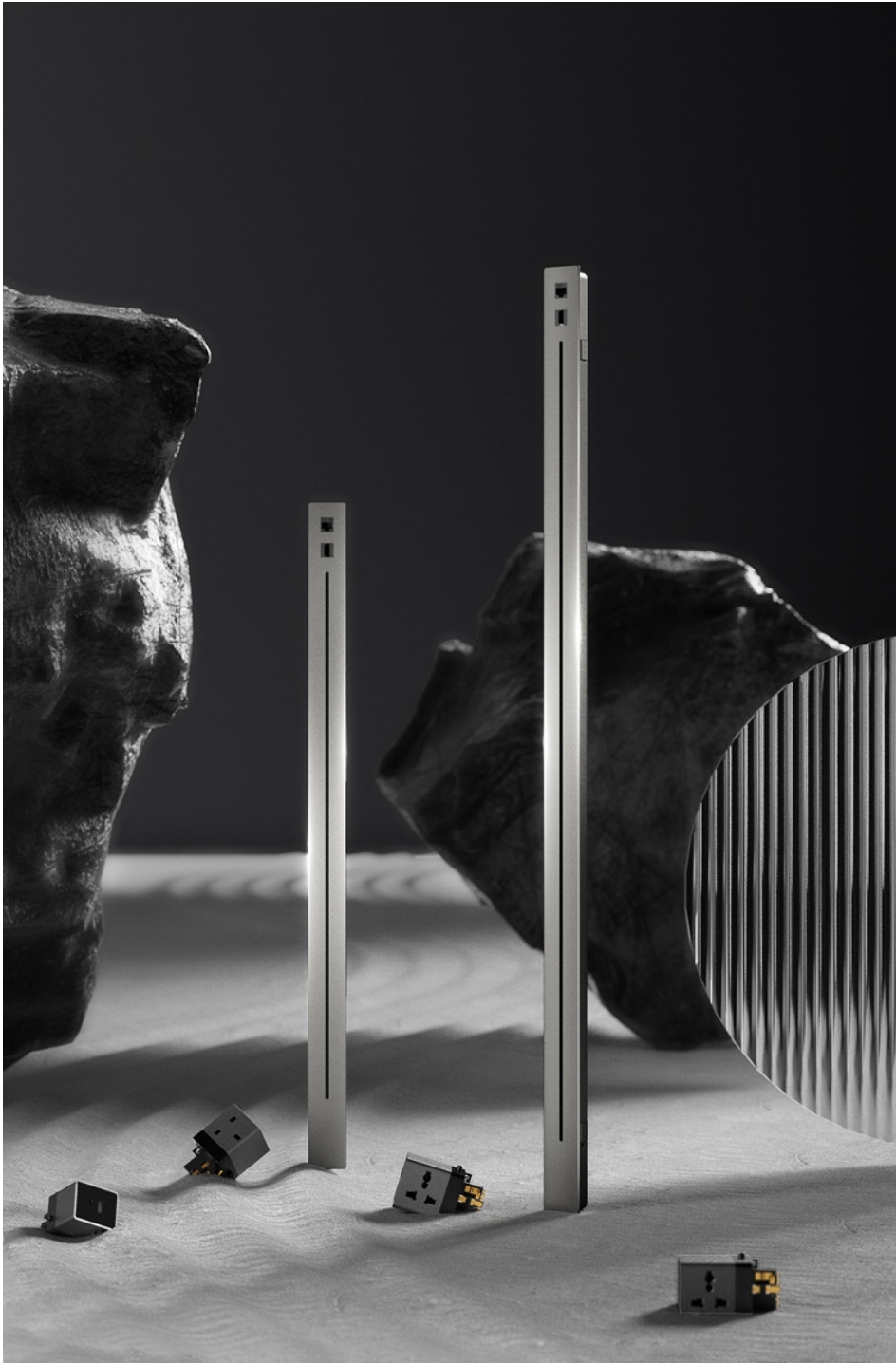
Glide X Power Track

Premium Socket Solutions

www.tonosystems.com



2025



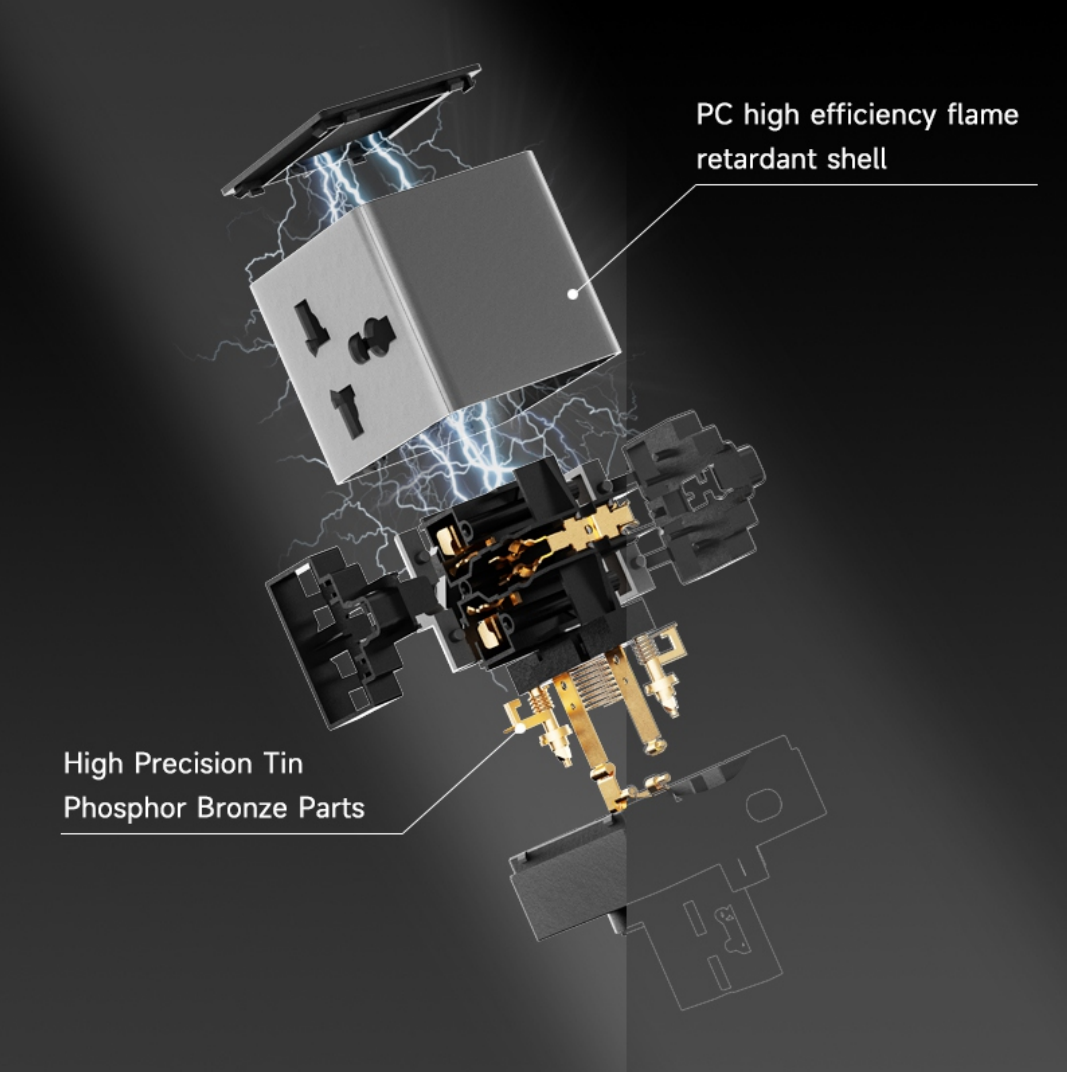
Tono Glide X — Modular Power Track System for Modern Workspaces

Upgrade your meeting rooms and workstations with the Tono Glide X, a sleek and powerful modular power track system designed for maximum flexibility and minimal clutter. Featuring a double-sided plug-in design, Glide X allows users on either side of the table to access power effortlessly.

Whether you need to charge laptops, phones, or multiple device types, the swappable power cubes offer universal socket compatibility, including USB-A, USB-C, UK, EU, and multi-standard plugs. The discreet in-table installation and premium aluminum finish make it perfect for conference tables, collaborative workstations, co-working spaces, and premium home offices.

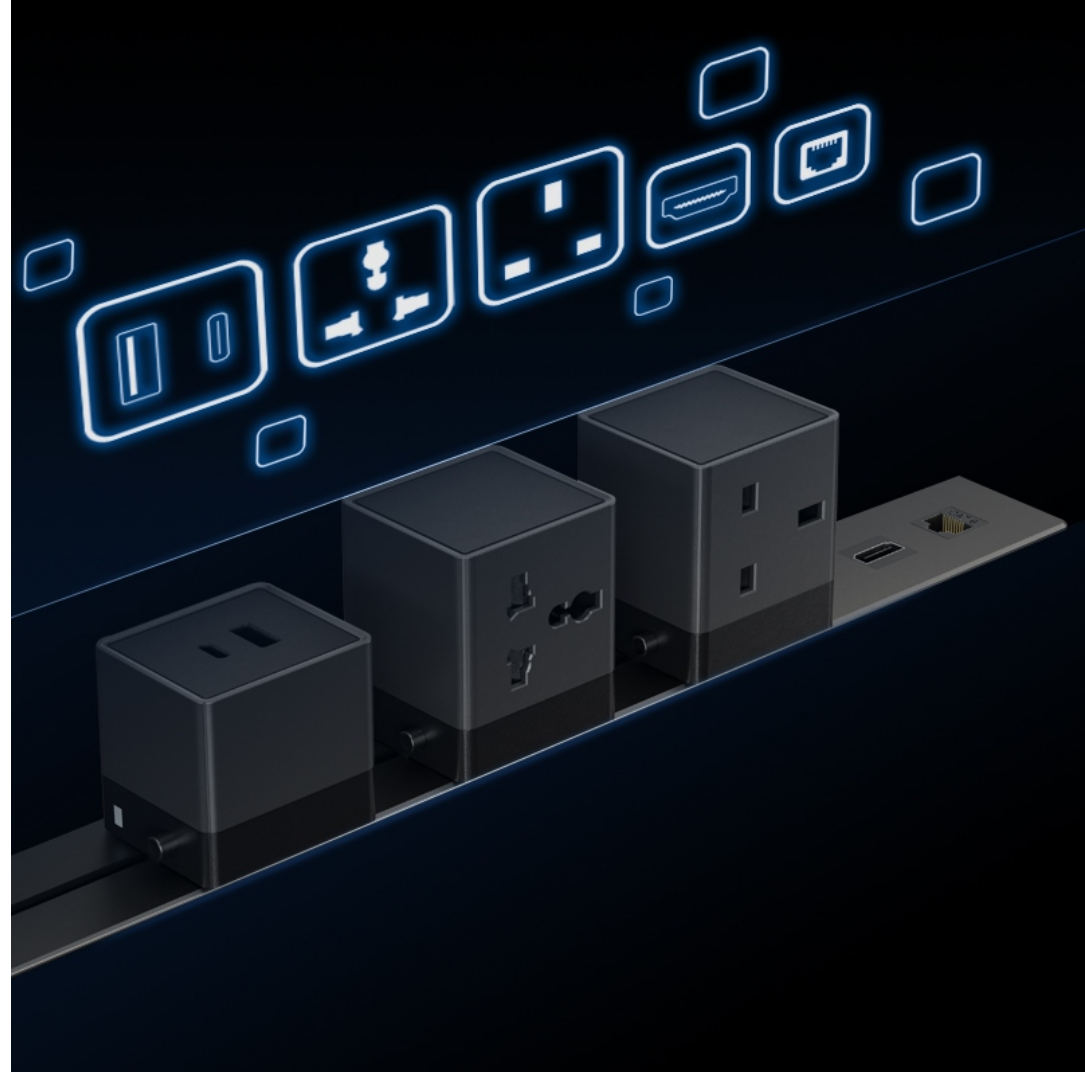
Key Features:

- **Double-Side Plug Access** — Supports simultaneous access from both sides
- **Interchangeable Socket Modules** — USB-A, USB-C, Indian, UK, EU & more
- **Track-Based Modular Design** — Customize socket positions in seconds
- **Sleek Low-Profile Finish** — Blends seamlessly into modern tables
- **Safe & Secure Connection** — Slide-in locking system for stable power delivery
- **Rated for 250V / 16A** — Reliable performance for commercial environments



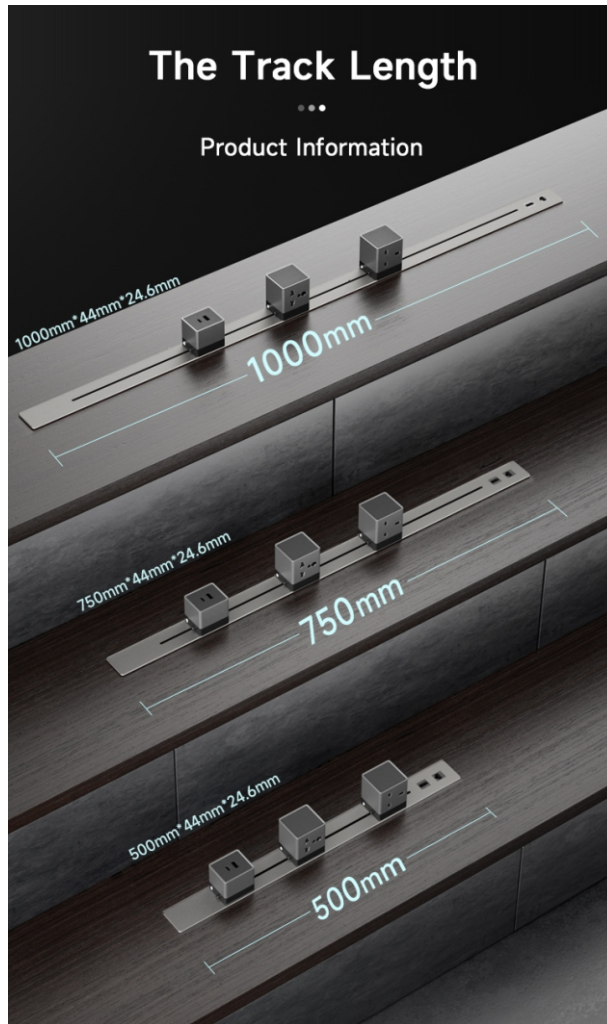
Engineered for Safety and Performance

The Tono Glide X socket module is built with precision-engineered Tin Phosphor Bronze internal parts for superior conductivity and long-lasting performance. Encased in a PC high-efficiency flame-retardant shell, it ensures maximum safety under high-load conditions. Every component is crafted to deliver reliable power with robust protection—ideal for demanding modern workspaces.



Universal Connectivity, One Seamless Track

The Tono Glide X Power Track offers an all-in-one modular solution to meet every connectivity need—whether it's USB-A, USB-C, universal power, each module is hot-swappable and designed for tool-free sliding installation, giving you full control to customize your power and data access. Fixed HDMI and RJ45 (LAN) add to and Type-C data add to list. Ideal for meeting rooms, hot desks, and tech-heavy environments, Glide X redefines convenience and modernity.



Precision Built. Durability Guaranteed. Designed to Fit Anywhere.

The Tono Glide X power track system offers a versatile, space-optimized design available in 500mm, 750mm, and 1000mm lengths, making it ideal for everything from individual desks to large conference tables. Built from premium aluminum alloy, it boasts a sleek finish that's durable, corrosion-resistant, and easy to maintain. Rigorously tested for over 5000 plug cycles, each module ensures long-lasting reliability in high-usage environments. Whether you're powering up laptops, phones, or network devices, Tono Glide X delivers with performance you can trust and a form that enhances modern workspace aesthetics.

The Adapters

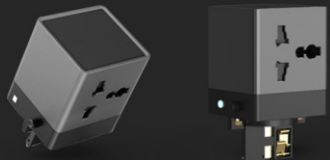


Module OE 004 (USB)

Current Voltage 5V 3.1A

Rated Power /

Detailed Size 58*43*73.3mm



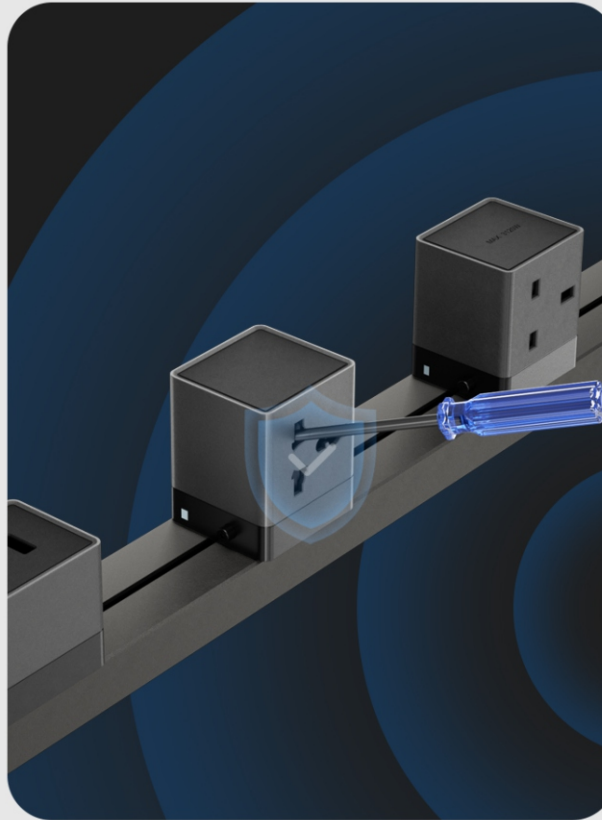
Module OE 005 (Universal)

Current Voltage 250V 10A

Rated Power Max 2500W

Detailed Size 86*57*47mm

Safety door design to prevent mis-insertion



Excellent Power

The track can carry a Max power of 5000W

A single adapter can carry a Max power of 2500W



High-Performance Modules Built for Safety and Power

Tono Glide X offers intelligently engineered power modules to support every workspace need. From the USB charging module (OE 004) with 5V 3.1A output to the universal power module (OE 005) rated for 250V/10A and up to 2500W, every unit delivers precision and reliability. Built-in safety doors prevent accidental mis-insertion, ensuring user protection at all times. Engineered to handle high-voltage demands, the track supports up to 5000W total load, while each adapter can manage up to 2500W—making Glide X a powerhouse of performance with uncompromised safety.



Contact us



+91 8591273587



contactus@tonosystems.com



www.tonosystems.com



1st Floor, Bhairav Milestone, Nehru Nagar, Wagle
Ind Estate, Thane, Maharashtra. India 400604